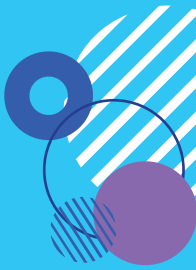


SSLC 2023 ESL FEE INFORMATION

All prices are effective for all registrations on/after January 1, 2023.
All fees in \$CAD. **Registration Fee: \$165**



* For Covid-19 related information, please refer to Page 3 of this document.

ESL ADULTS

ESL ADULTS WEEKLY TUITION					
Weeks	5hrs/wk	10hrs/wk	15hrs/wk	20hrs/wk	25hrs/wk
1-11	90	180	270	340	390
12-23	85	170	255	330	375
24 or more	80	160	240	310	350

ESL ADULTS MATERIAL FEES		
Weeks	5 or 10hrs/wk	15 or 25hrs/wk
1-4	35	110
5-8	70	165
9-16	115	240
17-24	140	380
25 or more	175	440

ESL ADULTS TUITION CALCULATION CHART					
Weeks	5hrs/wk	10hrs/wk	15hrs/wk	20hrs/wk	25hrs/wk
4	360	720	1,080	1,360	1,560
8	720	1,440	2,160	2,720	3,120
12	1020	2,040	3,060	3,960	4,500
16	1,360	2,720	4,080	5,280	5,600
20	1,700	3,400	5,100	6,600	7,500
24	1,920	3,840	5,760	7,440	8,400
28	2,240	4,480	6,720	8,680	9,800
32	2,560	5,120	7,680	9,920	11,200
36	2,880	5,760	8,640	11,160	12,600
40	3,200	6,400	9,600	12,400	14,000
44	3,520	7,040	10,560	13,640	15,400
48	3,840	7,680	11,520	14,880	16,800

ENGLISH4WORK VIRTUAL SELF-STUDY MODULES	
Medical English English for Hotel English for IT English for Accounting English for Office	\$85 for 5-month subscription (per module)

SPECIALIZED PROGRAMS	Tuition				
	4wks	8wks	12wks	Materials	Registration
BE: Business English	1,700	3,400	N/A	190	165
PMM: Power Speaking & Modern Media	1,700	3,400	N/A	110	165
IELTS: International English Language Testing System	1,700	3,400	5,100	190	165
ETT: English Through Translation (Korean)	1,700	3,400	N/A	110	165
EPE: English for Post-Secondary Education	1,850	3,700	5,550	255	165
IEPE: Intermediate English for Post-Secondary Education	1,850	3,700	5,550	255	165
CACCT: Communication for Airline Cabin Crew Training (10 hours/week). Afternoon Class only!	700	1,400	N/A	35/70	165

*PMM, BE, IELTS: After a minimum 4-week registration, weekly registration is available; Tuition \$425/wk
*Types of Specialized Programs offered at each campus or virtual may vary, and are subject to availability.

SSLC 2023 ESL FEE INFORMATION

All prices are effective for all registrations on/after January 1, 2023.
All fees in \$CAD. **Registration Fee: \$165**

ESL TEENS

ESL TEENS WEEKLY TUITION

Weeks	Tuition
1-11	400
12-23	385
24 to 39	375
40 to 48	350

ESL TEENS BOOKS & MATERIALS

Weeks	Fees Total
1-4	110
5-8	165
9-16	240
17-24	380
25 or more	440

ESL TEENS OTHER FEES

		2 nd Teen	3 rd Teen
Registration	165	120	120
High School Bridge Service*	550		

ESL TEENS TUITION CALCULATION CHART

Weeks	Tuition Total
4	1,600
8	3,200
12	4,620
16	6,160
20	7,770
24	9,000
28	10,500
32	12,000
36	13,500
40	14,000
44	15,400
48	16,800

*SSLC helps TEEN students to apply to public and private high schools in Canada.

- Please contact SSLC for how to obtain a Custodian Letter for minor students.
- Teen Students and parents must sign the Code of Conduct before program starts.

ESL ADULTS & TEENS MISCELLANEOUS FEES

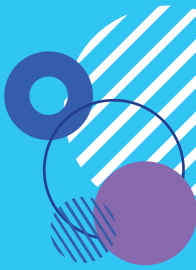
Registration ¹	165	Non-refundable; Applicable to ESL Adults, Teens & Specialized Programs
Medical Insurance	2.75	Per day
Copy of Certificate	25	Courier service fee not included
Copy of Transcript	15	
Courier Service	90	Upon request
Custodian Letter ¹	*	Non-refundable; Please Contact SSLC
Pathway Application Service	330	Free for registered SSLC students
Career Pathway Processing fee	165	
TOEIC IP Test	100	Contact SSLC for dates and registration
Private Tutoring ²	80	Per 60 min lesson; minimum 12 lessons every 4 wks; Please contact SSLC for customized tutoring options

1- Registration fee and custodian letter fee are non-refundable.

2- Please contact SSLC for more customized tutoring options.

SSLC 2023 ESL FEE INFORMATION

All prices are effective for all registrations on/after January 1, 2023.
All fees in \$CAD. **Registration Fee: \$165**



ENGLISH FOR CHILDREN & FAMILIES

CHILDREN WEEKLY TUITION	
Weeks	Tuition
2-4	450
5 or more	425

CHILDREN OTHER FEES			
	1 st child	2 nd child	3 rd child
Registration	165	120	100
Materials	1-4 wks	5-8 wks	
	110	165	

CHILDREN TUITION CALCULATION CHART	
Weeks	Tuition Total
2	900
3	1,350
4	1,800
5	2,125
6	2,550
7	2,975
8	3,400

* All students 6 to 12 years old must have a custodian / guardian in Vancouver, who is responsible for pick up and drop off at school, accommodation and care of the child.

* All children must have insurance that also covers Covid-19.

* Children's parent(s) / guardian(s) must sign a permission / agreement document upon registration.

* Please refer to SSLC Accommodation Price List for accommodation & related fees.

* ECF Children's Program includes mandatory lunch supervision.

REFUND POLICY (Please refer to our full refund policy at studyssslc.com/library)

Reason	Time	Refund
Student authorization denied*	on or before first day	100% less Registration Fee
Withdrawal	30 days or more before start of program	100% less 10% to max. of \$1,000
Withdrawal	Less than 30 days before start of program	100% less 20% to max. of \$1,300
Withdrawal/Dismissal	Up to and including 10% of program's duration	70%
Withdrawal/Dismissal	After 10% but before 30% of program's duration	50%
Withdrawal/Dismissal	After 30% (30% or more) of program's duration	0%

Note: Security deposit or placement fee, related to camp program or homestay are not refundable.

*Depending on the provincial / federal government's health and safety guidelines and restrictions, Covid protocols and measures may be in place at any or all of the SSLC locations at the time of program delivery. The protocols and measures may change without prior notice. Students must be fully vaccinated against Covid-19 in order to participate in the programs. Please visit our website for the latest information on our Covid measures, or speak with our representatives.

The Government of Canada Covid-related information and resources: [Coronavirus disease \(COVID-19\)](#)

The Government of British Columbia Covid guidelines and restrictions: [B.C.'s response to COVID-19](#)

The Government of Ontario Covid guidelines and restrictions: [COVID-19 \(coronavirus\) in Ontario](#)

