

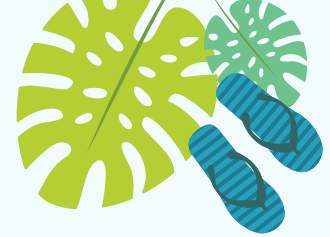


GOOD TIME SUMMER  
**TORONTO**  
2024



## GOOD TIME SUMMER SCHEDULE

Weekday activities start at 3:00 pm



TIME	MONDAY	TUESDAY	WEDNESDAY	THURSDAY	FRIDAY	SATURDAY	SUNDAY
<b>WEEK 1</b>	July 1	July 2	July 3	July 4	July 5	July 6	July 7
9:00~3:00	Canada Day (School Closed)	New Student Orientation & ESL	ESL	ESL	ESL	Casa Loma Castle	Free Time
<b>AFTER SCHOOL</b>		City Walking Tour	Ripley's Aquarium	Free Time	St. Lawrence Market		
<b>WEEK 2</b>	July 8	July 9	July 10	July 11	July 12	July 13	July 14
9:00~3:00	New Student Orientation & ESL	ESL	ESL	ESL	ESL	Canada's Wonderland	Free Time
<b>AFTER SCHOOL</b>	REC Room (Arcade Games)	Free Time	Laser Tag	Free Time	High Park		
<b>WEEK 3</b>	July 15	July 16	July 17	July 18	July 19	July 20	July 21
9:00~3:00	New Student Orientation & ESL	ESL	ESL	ESL	ESL	Niagara Falls	Free Time
<b>AFTER SCHOOL</b>	China Town/ Kensington	Free Time	Graffiti Alley and Fashion District	Free Time	Shopping		
<b>WEEK 4</b>	July 22	July 23	July 24	July 25	July 26	July 27	July 28
9:00~3:00	New Student Orientation & ESL	ESL	ESL	ESL	ESL	Toronto Island	Free Time
<b>AFTER SCHOOL</b>	Baseball Game	Free Time	CN Tower	Free Time	Royal Ontario Museum		
<b>WEEK 5</b>	July 29	July 30	July 31	Aug 1	Aug 2	Aug 3	Aug 4
9:00~3:00	New Student Orientation & ESL	ESL	ESL	ESL	ESL	Casa Loma Castle	Free Time
<b>AFTER SCHOOL</b>	City Walking Tour	Free Time	CN Tower	Free Time	St. Lawrence Market		
<b>WEEK 6</b>	Aug 5	Aug 6	Aug 7	Aug 8	Aug 9	Aug 10	Aug 11
9:00~3:00	New Student Orientation & ESL	ESL	ESL	ESL	ESL	Canada's Wonderland	Free Time
<b>AFTER SCHOOL</b>	REC Room (Arcade Games)	Free Time	Laser Tag	Free Time	High Park		
<b>WEEK 7</b>	Aug 12	Aug 13	Aug 14	Aug 15	Aug 16	Aug 17	Aug 18
9:00~3:00	ESL	ESL	ESL	ESL	ESL	Niagara Falls	Departure
<b>AFTER SCHOOL</b>	China Town/ Kensington	Free Time	Graffiti Alley and Fashion District	Free Time	Shopping		

Activities are subject to change, and may be substituted with others. Substitution is not guaranteed.  
There are no classes or activities on Canadian national/provincial holidays.

## GOOD TIME SUMMER SCHEDULE

### THE PROGRAM INCLUDES

- 25 hrs/week ESL Classes
- Registration Fee
- Material Fee
- 3 After-Class Activities per week
- 1 Saturday Activity per week
- Graduation Certificate

### HOMESTAY OPTION INCLUDES

- Placement Fee
- Single room with 3 meals a day/Packed Lunch for school days
- Airport Pick up and Drop Off from YYZ airport

### NOT INCLUDED

- Insurance (\$2.80/day)
- Custodian Document fee
- Local Transportation Pass (\$40.00 for 15 single trips/week or \$129 per each calendar month for an unlimited transit pass)

START DATE	2 WEEKS END DATE	3 WEEKS END DATE	4 WEEKS END DATE	5 WEEKS END DATE	6 WEEKS END DATE	7 WEEKS END DATE
July 2	July 13	July 20	July 27	August 3	August 10	August 17
July 8	July 20	July 27	August 3	August 10	August 17	--
July 15	July 27	August 3	August 10	August 17	--	--
July 22	August 3	August 10	August 17	--	--	--
July 29	August 10	August 17	--	--	--	--
August 6	August 17	--	--	--	--	--

- Check-in & Check-out: Sunday (*Check in on July 1, 2024 for the first week*)
- Minimum registration: 2 weeks
- Students opting to stay for the entire Program duration may repeat some of the activities. See the sample schedule.

	2 WEEKS	3 WEEKS	4 WEEKS	EXTRA WEEK
WITH HOMESTAY	\$3,460	\$4,725	\$5,950	\$1,350
WITHOUT HOMESTAY	\$2,450	\$3,340	\$4,190	\$975

- All Fees are in CAD
- Extra week fees only apply to registration over 4 weeks.

### For Parents/Guardians:

- In the event that your child is unable to travel home as scheduled due to any emergency or delay and **your child's homestay accommodation is no longer available because of prior booking arrangements**, SSLC requires that the parent/guardian be responsible for all associated fees for the care of their child until such time that they can depart Canada.
- The associated fees in the above case mentioned may include but are not limited to: **Hotel accommodation, 3 meals/day, transportation, new flight arrangements and staff support services as needed.**
- Your child must travel with a credit card, or a Credit Card must be provided to SSLC for all charges as needed. **SSLC will not pay for any related costs.** We suggest using the services of [www.sidekickcard.com](http://www.sidekickcard.com) for these emergency situations and be well prepared as a parent.
- Your child must also carry **Travel Insurance**, and we request that you purchase one extra day of coverage. You can purchase medical insurance from SSLC, please ask our staff.
- Please note if you requested Custodial services from SSLC, we are not responsible for any fees or costs related to Medical Emergencies.
- Parents and student will sign a separate consent form upon registration.

